

SFA lets you choose the control system you want, no matter what model of toilet you have selected.

THE ELECTRIC SWITCH COMFORT AND WALL MOUNTING KIT

THE ELECTRIC SWITCH COMFORT



- A flushing position
 - A maceration - pumping position
- The duration of each cycle is controlled by the user to suit their requirements.

OPTION

WALL MOUNTING KIT

In cases where it is difficult to recess the controls in the wall, SFA proposes an optional wall mounting screw box for models equipped with electric switch Comfort.



THE ELECTRONIC KEYBOARD LUXE AND FRAME COLOUR OPTIONS

THE ELECTRONIC KEYBOARD LUXE



- Power ON indicator light
- A Normal flushing cycle that uses 2.4 L of water
- An Eco flushing cycle that uses 1.2 L of water
- A Tank Full indicator light showing that the black water tank is full
- Empty: key pressed to empty the bowl completely in choppy seas

OPTION

FRAME COLOUR OPTIONS FOR ELECTRONIC KEYBOARDS LUXE

To make your interior look even better, SFA proposes touchpad frames in different colours.

- Standard: white colour
- All electronic Luxe keyboards are delivered as standard with a white colour frame.
- Options: 3 colours to choose (Grey, Black carbon, Glossy brown).



COMFORT PLUS AND COMFORT LUXE BUTTONS

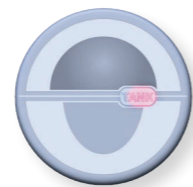
PUSH BUTTON COMFORT PLUS

- Two automatic cycles
- 2,4 L of rinse water by one single tap
- 1,2 L of rinse water by 2 successive pushes
- A control Dry Bowl by extended push



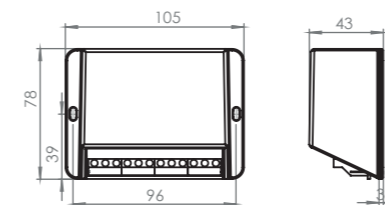
ELECTRIC BUTTON COMFORT LUXE

- Two automatic cycles
- Normal: 2,4 L of rinse water
- Eco: 1,2 L of rinse water
- Dry Mode Bowl: press and hold the Normal mode button
- A Tank indicator light showing that the black water tank is full

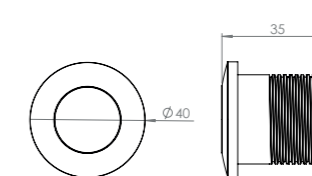


DIMENSIONS

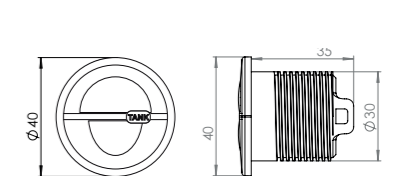
Electronic control box for following systems: Luxe, Comfort Luxe, Comfort Plus



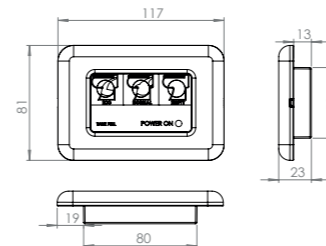
Push button Comfort Plus



Electric button Comfort Luxe



Electronic keyboard Luxe



Electric switch Comfort

