

SANIFLO®
A PUMP COMPANY SINCE 1958

AUTOMATIC MARINE AND RV TOILETS



SANI MARIN



**THE INVENTOR, DESIGNER AND MANUFACTURER SINCE 1958,
SFA SANIFLO IS THE WORLD'S LEADER OF MACERATING TOILETS FOR
THE MARINE AND RECREATIONAL VEHICLE INDUSTRIES**

Specially designed for these markets, **SFA SANIFLO** toilets are particularly appreciated by professional and pleasure boaters as well as for cross-country RV enthusiasts all over the world. Their high levels of reliability and comfort, the small quantities of water and electricity needed to operate them and their simplicity of installation are why **SFA SANIFLO** systems are considered best in the industry.

PAGE 3	OPERATING PRINCIPLE / BENEFITS
PAGES 4-5	SANIMARIN MAXLITE
PAGES 6-7	SANIMARIN 31
PAGES 8-9	SANIMARIN 43
PAGES 10-11	SANIMARIN 4
PAGES 12-13	SANIMARIN PUMP
PAGE 14	INSTALLATION ADVICE
PAGE 15	TECHNICAL INFORMATION

The result of considerable Research and Development work carried out in our laboratories, the new **SFA SANIFLO** systems represent a big technological step forward in the field of boat and RV toilets. The **SFA SANIFLO** units combines comfort, efficiency and reliability, while giving absolute priority to **SILENCE!**



All products comply with North American standards. Applicable standards include CSA B45.6-11, ASME A112.3.4-2013/CSA B45.9-13, CSA C22.2 No 108-14, UL 778-6th Ed.

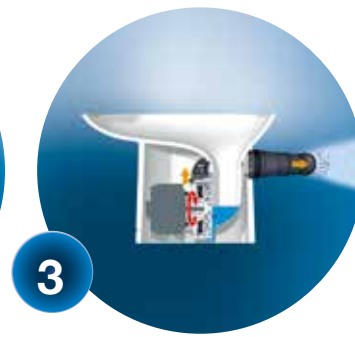
OPERATING PRINCIPLE



After activation of the flush mechanism, the motor starts automatically.



System macerates organic waste and paper into fine particles in 3 to 6 seconds.



Waste is then discharged through a standard 1" or 1-1/2" pipe.



The tank is then completely emptied and the s-trap from the toilet is refilled with water.



Scan with your smart phone to watch a video clip of the operating principle

BENEFITS



SIMPLICITY

Installation is very simple as it easily replaces old hand pump toilets.



ENVIRONMENTAL

Eco-friendly systems keep water usage to its minimum.



SILENT

These systems are the quietest electric toilets on the market.



EFFICIENT

Economical systems as water and electrical consumption are minimum.



SOLIDLY BUILT

Excellent macerating system patented more than 60 years ago for worldwide use.

With its pumping capabilities of up to **10 feet vertically and/or 100 feet horizontally**, the Sanimarin systems can discharge the waste water to a holding tank wherever it's located. Its efficient maceration process facilitates tank cleaning and emptying while giving you the flexibility of pumping out the waste via **small diameter pipes** through the floor or the wall to its point of discharge. With its improved control system, you can **save water** by controlling the amount being flushed as well as it gives you an easier way to **monitor the holding tank***.

* Maxlite model equipped with different control system

SANIMARIN MAXLITE

IDEAL FOR CONFINED SPACES



MARINE MARKET



RV MARKET



SANIMARIN MAXLITE

The MAXLITE macerating toilet system, the latest model from SFA SANIFLO, is the ideal solution to replace your hand pump toilet. Its exceptionally light weight is an additional asset for your boat or RV.



TECHNICAL FEATURES

Discharge: 10 Ft vertically / 100 Ft horizontally

Non-return valve: Integrated

Discharge pipe diameter: 1" or 1-1/2"

Power/Voltage: 300 W (12V) or 360 W (24V)

Electrical consumption: 0.007Ah (12V) and 0.004Ah (24V) per second

Water consumption: Quantity decided by user

Water use: System comes with a built-in self-priming pump. The Maxlite cannot be connected to a pressurized water supply system.

Weight: 17.6 Lbs

BENEFITS

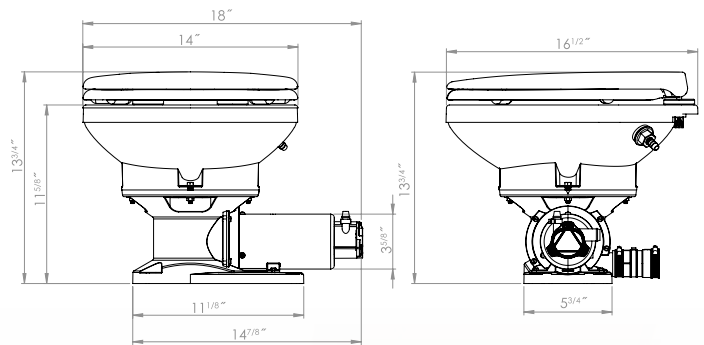
Same footprint as hand pump toilets

Provided with soft-close toilet seat

Ultra light material used for bowl construction

Enables variable positioning of the bowl to fit in very tight spaces

Equipped with powerful stainless steel macerating blade



CONTROL SYSTEM



- System operated by a two-position rocker switch
- Command to add water for supply or replenish
- Command to macerate and pump out waste

SANIMARIN 31

SANIMARIN BESTSELLER



MARINE MARKET



RV MARKET



SANIMARIN 31

Handy, light and compact, the SANIMARIN 31 macerating system is one of the smallest automatic toilet on the market. Benefiting from its compact footprint, this model is easily installed in confined spaces.



Provided with the necessary fittings for different discharge options.

TECHNICAL FEATURES

Discharge: 10 Ft vertically / 100 Ft horizontally

Non-return valve: Integrated

Discharge pipe diameter: 1" or 1-1/2"

Power/Voltage: 300 W (12V) or 360 W (24V)

Electrical consumption: Information on page 15

Water consumption: Depending on the control system from 0.31 to 0.63 gallons (1.2 to 2.4 L)

Water use: Onboard freshwater (integrated solenoid valve) or outside pressurized water. Minimum pressure of supplied water is 25 PSI (1.7 bar). Recommended pump flow rate is 2.9 GPM.

Weight: 36.2 Lbs

BENEFITS

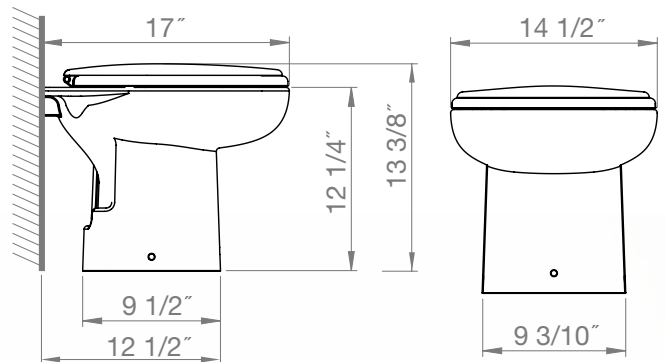
Extra low profile

Quiet operation

Provided with soft-close toilet seat

Small footprint to fit in tight spaces

Equipped with powerful stainless steel macerating blade



CONTROL SYSTEM



- "Power On" and "Tank Full" indicator lights. (Optional connection to your black water tank gauge)
- Economical flush (0.32 gallons), normal flush (0.63 gallons). (Adjustable to up to 0.79 gallons)
- "Empty" button allows to empty out bowl completely. Used for maintenance as well.



SANIMARIN 43

QUIET AND COMFORTABLE



MARINE MARKET



RV MARKET



SANIMARIN 43

The SANIMARIN 43 contemporary finish, its flowing modern lines and lightweight design make it ideal for all types of boats and RVs.



TECHNICAL FEATURES

Discharge: 10 Ft vertically / 100 Ft horizontally

Non-return valve: Integrated

Discharge pipe diameter: 1" or 1-1/2"

Power/Voltage: 300 W (12V), 360 W (24V) or 110V

Electrical consumption: Information on page 15

Water consumption: Depending on the control system from 0.31 to 0.63 gallons (1.2 to 2.4 L)

Water use: Onboard freshwater (integrated solenoid valve) or outside pressurized water.

Minimum pressure of supplied water is 25 PSI (1.7 bar). Recommended pump flow rate is 2.9 GPM.

Weight: 49 Lbs

BENEFITS

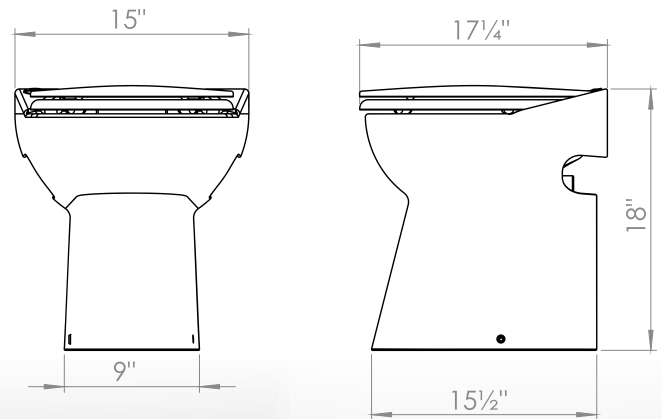
Standard and comfortable height

Provided with soft-close toilet seat

Quiet operation

Also available in 110V
(pushbutton activation)

Equipped with powerful
stainless steel macerating blade



CONTROL SYSTEM PANEL (ONLY FOR 12/24V SYSTEMS)



- "Power On" and "Tank Full" indicator lights. (Optional connection to your black water tank gauge)
- Economical flush (0.32 gallons), normal flush (0.63 gallons). (Adjustable to up to 0.79 gallons)
- "Empty" button allows to empty out bowl completely. Used for maintenance as well.

SANIMARIN 4

COMFORT OF TRADITIONAL TOILET



MARINE MARKET



RV MARKET



SANIMARIN 4

The strongly-built, reliable and comfortable SANIMARIN 4 ensures the role of a traditional toilet and proves to be the ideal compromise between comfort and practicality.



TECHNICAL FEATURES

Discharge: 10 Ft vertically / 100 Ft horizontally

Non-return valve: Integrated

Discharge pipe diameter: 1" or 1-1/2"

Power/Voltage: 300 W (12V), 360 W (24V) or 110V

Electrical consumption: Information on page 15

Water consumption: Depending on the control system from 0.31 to 0.63 gallons (1.2 to 2.4 L)

Water use: Onboard freshwater (integrated solenoid valve) or outside pressurized water. Minimum pressure of supplied water is 25 PSI (1.7 bar). Recommended pump flow rate is 2.9 GPM.

Weight: 65 Lbs

BENEFITS

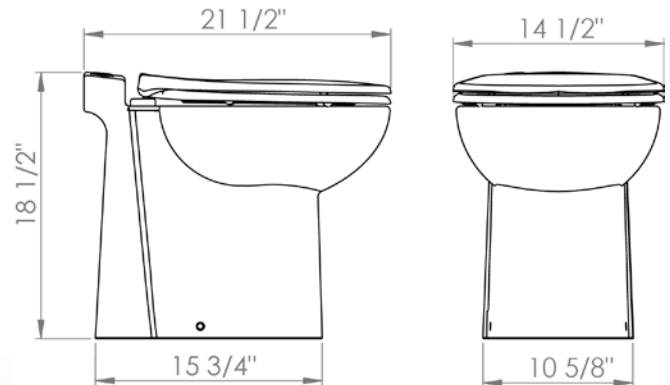
Vertical back design

Standard and comfortable height

Quiet operation

Also available in 110V
(pushbutton activation)

Equipped with powerful
stainless steel macerating blade



CONTROL SYSTEM PANEL (ONLY FOR 12/24V SYSTEMS)



- "Power On" and "Tank Full" indicator lights. (Optional connection to your black water tank gauge)
- Economical flush (0.32 gallons), normal flush (0.63 gallons). (Adjustable to up to 0.79 gallons)
- "Empty" button allows to empty out bowl completely. Used for maintenance as well.

SANIMARIN PUMP

POWERFUL AND RELIABLE



MARINE MARKET



RV MARKET



SANIMARIN PUMP

The SANIMARIN PUMP is essential to install a shower or sink in a boat or RV. A very compact unit which can be fitted below floorboards.



TECHNICAL FEATURES

Discharge: 12 Ft vertically / 120 Ft horizontally

Non-return valve: Integrated

Discharge pipe diameter: 3/4" or 1"

Power/Voltage: 340 W (12V), 350 W (24V) or 110V

Weight: 12 Lbs

BENEFITS

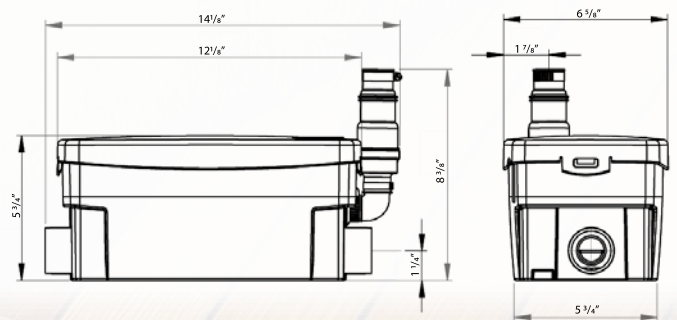
Compact design

Powerful and quiet operation

Available in 12, 24 and 110V

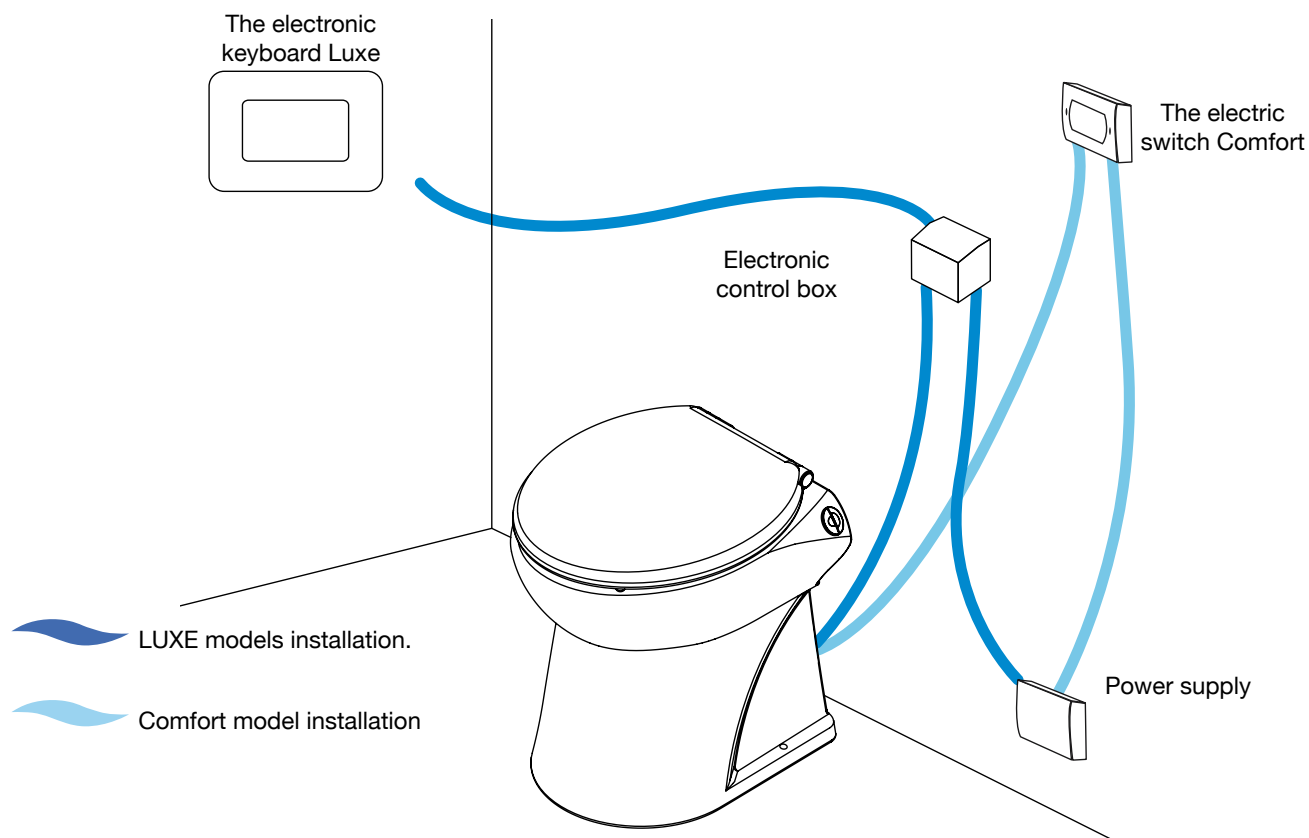
Low starting activation level

Two lower inlets for greater flexibility



INSTALLATION ADVICE

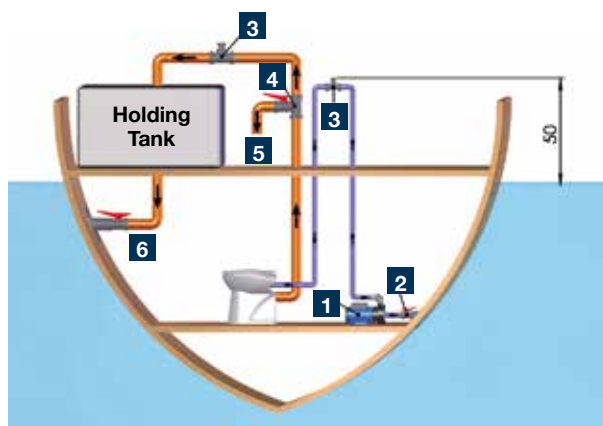
ELECTRICAL INSTALLATION



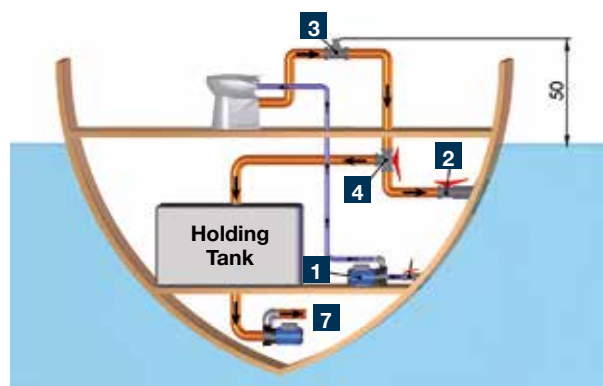
HYDRAULIC INSTALLATION (MARINE)

Installation adaptable to all configurations and all types of watercraft. You can supply your WC with seawater through the optional pump or with fresh water (except the Maxlite model, which features a built-in seawater pump).

**WC below sea level,
gravity draining of holding tank.**



**WC above sea level,
holding tank below sea level.**



- 1 Seawater pump 2 Stop cock 3 Vent 4 3 way valve 5 Discharge of the toilet direct to the sea 6 Gravity drainage to the sea of the holding tank 7 Discharge to the sea of the holding tank

TECHNICAL INFORMATION ABOUT OUR 12/24 V PRODUCT RANGE



More information			Pages 4-5	Pages 6-7	Pages 8-9	Pages 10-11
Control Systems	Electric Switch		.			
	Electronic Keyboard			.	.	.
Operation Running Time	Electric switch		User's choice			
	Electronic Keyboard	Eco Normal		8s/15s		
Water Consumption	Electric switch		Decided by user			
	Electronic Keyboard	Eco Normal		0.31 gal/0.63 gal		
Pumping Height			10 Feet			
Horizontal Pumping Distance			100 Feet			
Weight			17.6 Lbs	36.2 Lbs	49 Lbs	65 Lbs
Minimum Pressure				25 PSI		
Electricity Consumption per Second	Electric switch		12V: 0.007Ah /24V: 0.004Ah			
Electricity Consumption per Automatic Cycle	Electronic Keyboard	Eco cycle:8s		12V : 0.056Ah 24V: 0.032Ah		
		Normal cycle:15s		12V: 0.105Ah 24V: 0.060Ah		
Current consumption	12V (300W)		25A			
	24V (360W)		15A			
Electric wire diameter	12V (300W)		1.5 mm² = 1M max / 2.5mm² = 2M max / 4mm² = 3M max / 6mm² = 4,3M max			
	24V (360W)		1.5 mm² = 3,5 M max / 2.5mm² = 6M max / 4mm² = 9,5 M max / 6mm² = 14 M max			

SANIMARIN PRODUCTS THROUGHOUT THE WORLD

Our products are available
from 24 subsidiaries and numerous
international partners.

• Subsidiaries
○ Exclusive dealers

SANI MARIN

USA – TOLL FREE:
800-571-8191
www.saniflo.com
105 Newfield Avenue
Suite B, Raritan Center
Edison NJ 08837

CANADA – TOLL FREE:
800-363-5874
www.saniflo.ca
500 Jamieson Parkway
Unit 5
Cambridge, ON N3C 0G5